

Concrete cloth

water proofing material

SL-Concrete cloth is also called concrete canvas (CC), which is invented in UK, and develop fast to worldwide.

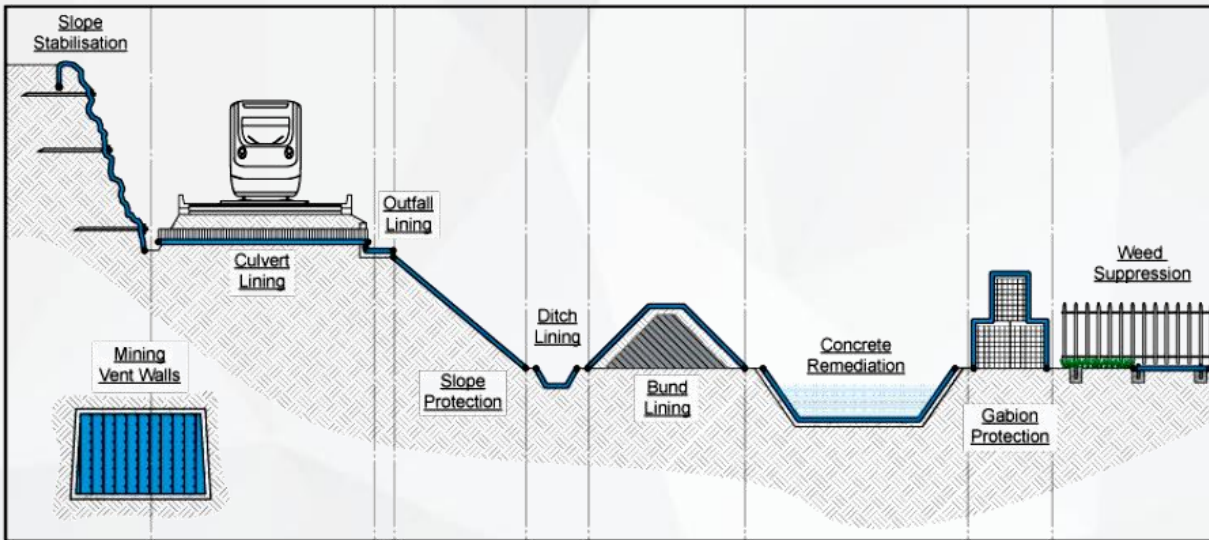
Concrete canvas does not need plant or mixing equipment, simply position the Canvas and just add water. It can save labor cost and Greatly shorten the construction time.

SL-Concrete cloth is developed from Concrete Canvas, Higher performance-to-price ratio and similar quality.



● Application

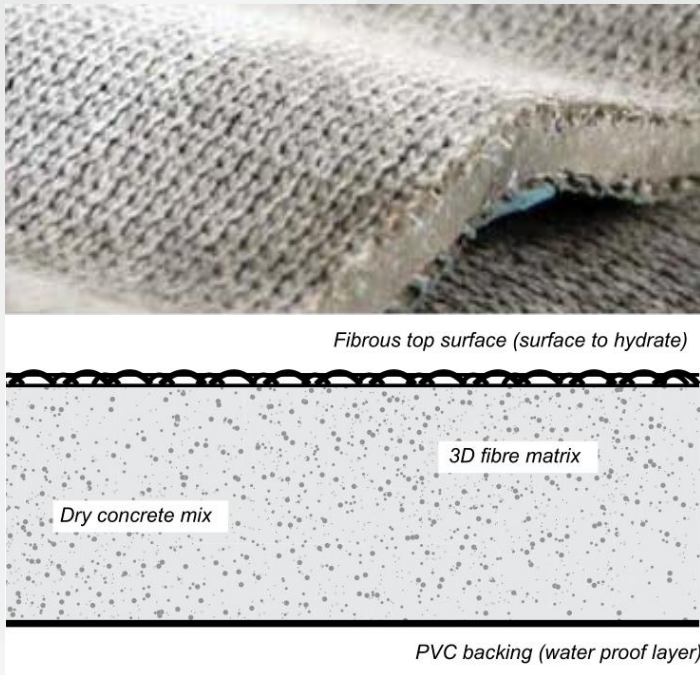
Concrete canvas is typically used to replace conventional concrete (in-situ, precast or sprayed) for erosion control, remediation and construction applications.



Concrete cloth

water proofing material

● Section



● Feature

Easy to Use

Packed in small rolls or bulk rolls, man portable or machine moving. Pre-mixed concrete just need adding water.

Rapid setting

Can be reprocessed within 2hours, and 80% strength at 24 hours after hydration

Eco-friendly

Low mass, low carbon technology which uses up to 95% less material than conventional concrete for many applications.

Flexible

Good drape characteristics and closely follow the profile of any ditch or embankment. The material can negotiate tight bends and fit around existing infrastructure. Unset CC can be cut or tailored.

High strength

The fibre reinforcement prevents cracking, absorbs energy from impacts and provides a stable failure mode

Durable

Chemically resistant, good weathering performance and no degrade in UV.

Water proof

The PVC backing on one surface of the Canvas ensures that the material has excellent impermeability.

● Physical property

Model	Thickness (mm)	Batch roll size (sqm)	Bulk roll size (sqm)	Roll width (m)
CC5	5	10	200	2
CC10	10	10	200	2
CC30	30	N/A	80	2

Model	Mass (unset) (kg/m ²)	Density(unset) (kg/m ³)	Density (set) (kg/m ³)
CC5	9	1500	30-35%
CC10	15	1500	30-35%
CC30	19	1500	30-35%

● Pre-Set Property

Set time:

Initial set time ≥ 2 hours Final set time ≤ 4 hours
SL-CC will achieve 80% strength at 24 hours after hydration.

Method of Hydration

Spray the fibre surface with water until it feels wet to touch for several minutes after spraying.

Re-spray the CC again after 1 hour if:

- Installing CC5
- Installing CC on a steep or vertical surface
- Installing in warm climates



● Post Set Property

Strength: Compressive ASTM C109 – 02
10 day compressive failure stress (MPa)

Bending BS EN 12467:2004
10 day bending failure stress (MPa)
10 day bending Youngs modulus (MPa)

Reaction to Fire :

BS EN 13501-1:2007+A1:2009 B-s1, d0

Chemical Resistance: (BS EN 14414)

Acid (pH4.0) (56 day immersion at 50° C)
Alkaline (pH12.5)
Hydrocarbon

Moh's hardness : 4-5

Please contact us for more properties



PRICE FOR CONCRETE CANVAS

FROM: Lisa Kang

Hongrui Boya (Tianjin) Trading Co.,Ltd.

Advance in 48-2-401 Dagang District, victory Street, Tianjin, China.

Mob/whatsapp: 0086-13663183616

Skype: lisakang8

email: lisa@shuanglinrubber.com

Date: May 13, 2020

Product	Thickness (mm)	MOQ (m2)	Unit price FOB Xingang (USD/m2)
Concrete Canvas	5	200	16.5
	10	100	17.5
	20	100	35

1. The above prices are based on FOB Xingang, China;
2. Packing: woven bags and pallets;
3. Expiry Date: June 12, 2020;
4. The following are the pictures of our concrete canvas and packing:



