



Warning!

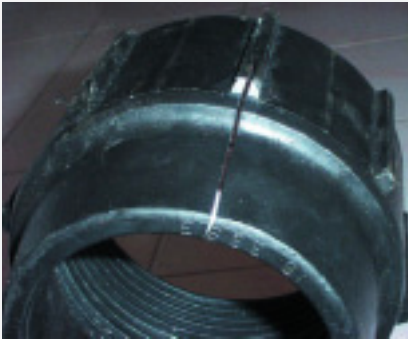
NOT ALL POLY PIPE FITTINGS ARE **PLASSON**.

Product Advice

Product: Plasson® Series 7 Fittings with Black Nuts

PLEASE DO NOT ASSUME ALL BLACK POLY FITTINGS ARE PLASSON® AND WILL PERFORM TO THE PLASSON® STANDARD!

X Non Plasson Fittings



Failed nut with longitudinal split



Failed body with longitudinal split

Non-Plasson fittings differ in dimensions and construction from the Plasson range. These differences cause problems when non-Plasson parts are used in replacements on Plasson bodies. A non-Plasson nut can be applied to a Plasson body, but it is not guaranteed to work to the Plasson standard.

✓ Genuine Plasson® Fitting



Genuine PLASSON® fitting with the Plasson brand name

Genuine Plasson® fittings have been tried and tested in various environments throughout Australia since 1978 and are the basis for reliable performance in the most demanding and rigorous applications, particularly mining.

- ✓ Specify Plasson® Series 7 Fittings with Black Nuts
- ✓ Ensure Fittings are Branded "Plasson®"
- ✓ Use Plasson® to Plasson® Fittings for Optimum Performance

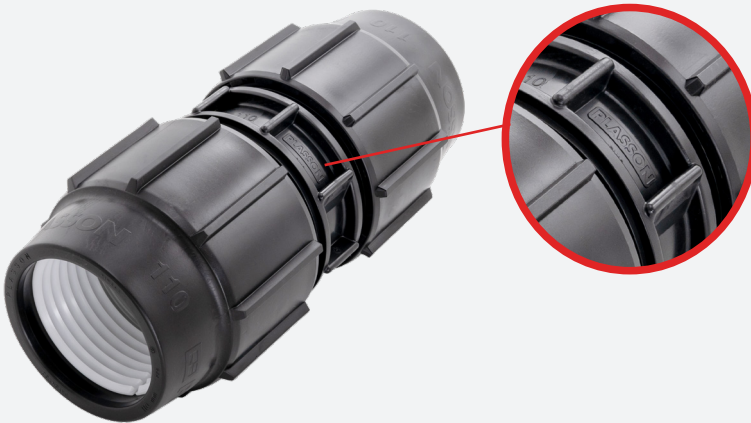
To ensure quality and reliability in your mining application, specify PLASSON® Series 7 Fittings with Black Nuts.



Warning!

NOT ALL POLY PIPE FITTINGS ARE PLASSON.

✓ **GENUINE PLASSON® FITTING**
with the Plasson brand name



YOUR SOLUTION IS TO SPECIFY AND ENSURE "PLASSON® SERIES 7 WITH BLACK NUTS" FITTINGS ARE PURCHASED.

CHECK THE BRAND ON ALL FITTINGS AND SPARE PARTS, ENSURE THEY ARE PLASSON®

For further details on the Plasson range contact:

P: 1300 PLASSON (1300 752 776)
sales@plasson.com.au
www.plasson.com.au

WARNING NOTICE!

Plasson have been supplying fittings continuously to the Australian poly pipe industry since 1978.

The design and quality of Plasson fittings are so well known and accepted in some industries that in the MINING industry, for example, fittings for poly pipe are often referred to as "Plassons". Many competitor fittings look similar to the genuine Plasson fitting. However, competitor fittings differ in dimensions and construction from Plasson fittings and these differences cause problems when non-Plasson parts are used as replacements on Plasson bodies. Recently even more onerous situations have arisen involving confusion with "imitation" fittings:

✓ Failures have occurred at various mine sites - split bodies and nuts. Unfortunately, some mine sites have 'reacted' by banning the use of the genuine Plasson fittings. The failures in all the reported cases have been identified as being non-Plasson fittings.

The confusion in using Plasson and non-Plasson fittings could also pose further complications where rigorous safety requirements are required in mining applications and the possible safety issues under the various states "Mine Safety Acts".

✓ In another reported case, Plasson fittings were again banned because of mistaken identity. Failed fittings at the White Foil Mine (near Jundana), Kalgoorlie caused severe leaking and pull outs. The fittings were mistakenly assumed to be Plasson because they were black, in this case, they were not the genuine Plasson item.