

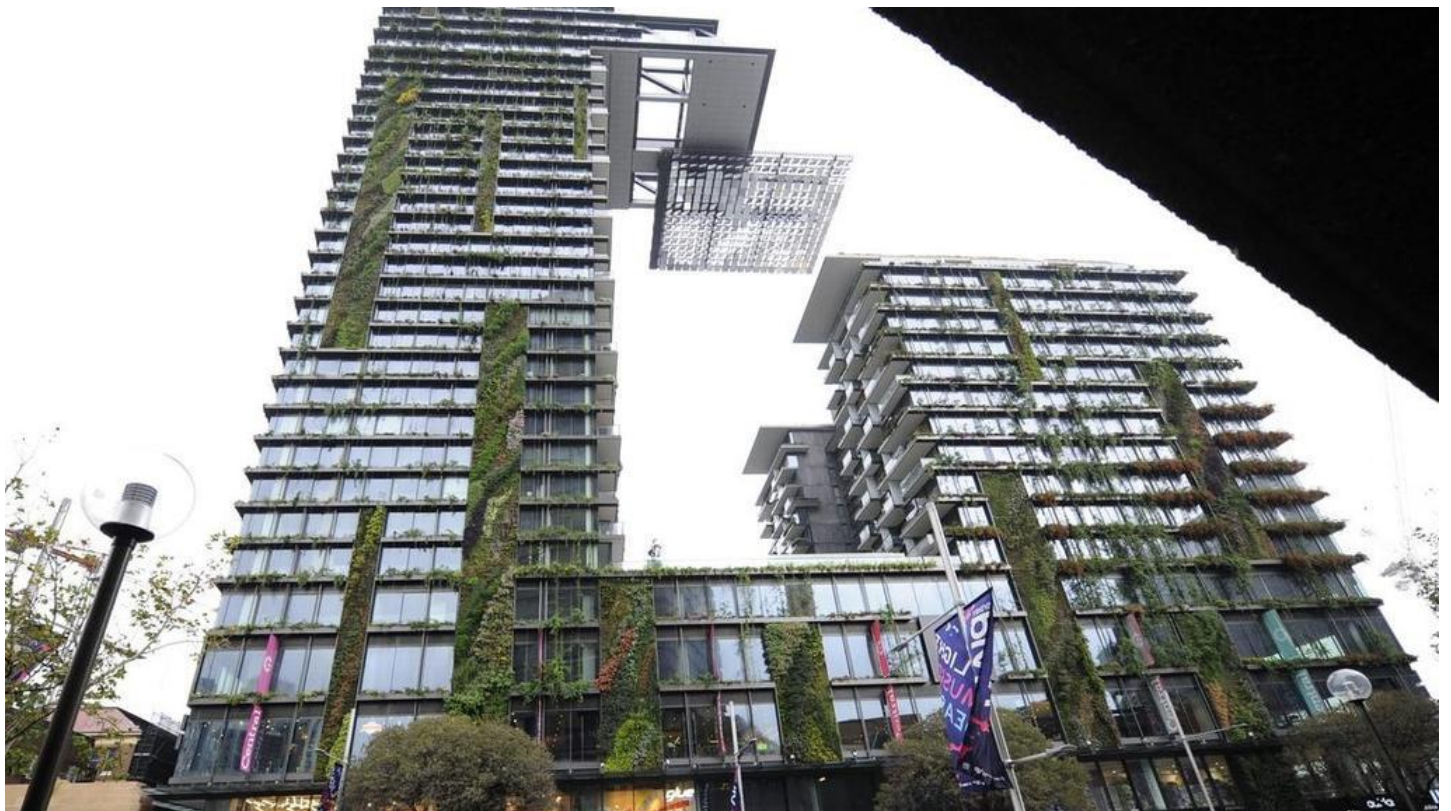
# One Central Park: Owners of Chippendale building launch legal challenge over cladding removal order

The owners of a Sydney skyscraper known as one of the city's 'greenest' developments have launched a legal challenge against the state government after being ordered to remove combustible cladding from the 34 storey building.



David Barwell

🕒 2 min read May 23, 2023 - 4:40PM Central Sydney



The building is one of Sydney's most recognisable skyscrapers.

The owners of a Sydney skyscraper known as one of the city's 'greenest' developments have launched a legal challenge against the state government after being ordered to remove combustible cladding from the 34 storey building.

The Department of Planning has issued Chippendale's One Central Park building with a fire safety order after an inspection allegedly found external walls contained the potentially flammable building material.

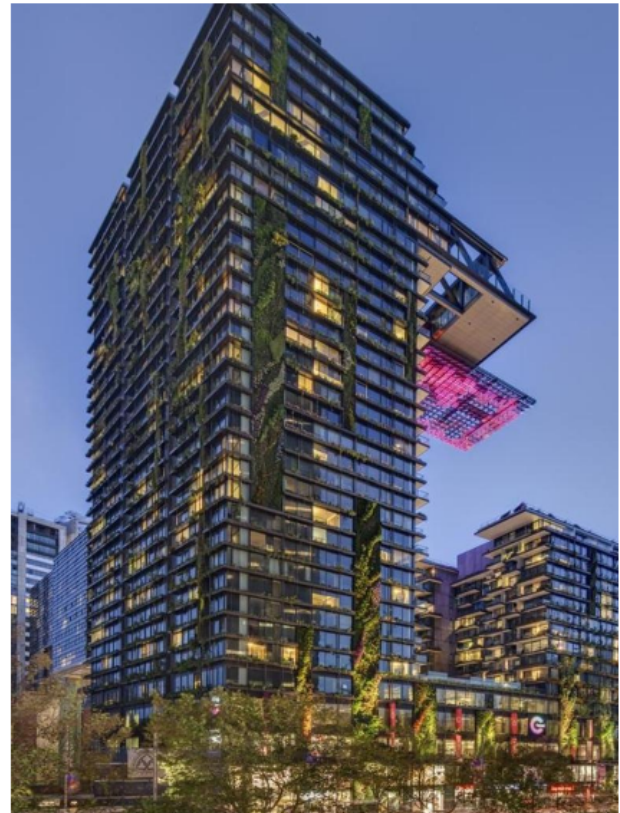
The order requires the owners of the building to carry out and fund various measures including stripping all aluminium composite panels from the exterior of the building.

The fire safety order states materials found at the site were “combustible and posed a fire safety risk” to occupants of the site.

The department has not publicly confirmed how many composite cladding panels it claims are contained within the site.



The development includes vertical gardens and light structures.



The skyscraper was built in 2013.



The complex, built in 2013, incorporates Central Park Mall and is known for its unique vertical hanging gardens and one of the world's highest rooftop floating gardens.

On its completion, the landmark development was awarded a five star green rating – making it the largest multi-residential building at the time to receive the distinction.



The development has been widely praised for its green credentials.

The Owners' Corporations – which owns the One Central Park building – have lodged an appeal against the fire order in the Land and Environment Court.

A spokesman for the owners at One Central Park said: “We are investigating the order and determining a plan of action to meet the requirements contained within it.”

“We have taken the matter to the Land and Environment Court to determine the best way forward and timing to comply with the order,” he said in a statement.

“As the matter is before the court it is too early to provide further details. However, we can confirm that the order requires the replacement of some isolated panels on the external walls. “We are currently working with our consultant team to figure out the best way to do this.

“Those who are familiar with One Central Park know that the facades are mainly glass and steel – these components are unaffected by the order. “

A Department of Planning spokeswoman confirmed interim fire safety measures have been put in place while the appeal is being heard.

“As the matter is before the court, the Department cannot comment further at this time.”

The inspection of the building was in line with the statewide review on cladding, launched in response to the fatal Grenfell Tower fire in London in 2017.

Latest figures show 379 buildings across NSW are under review for external wall cladding or are undergoing remediation works as of February this year.