

COMPLETE CONTAINMENT SOLUTIONS

Energy | Mining | Water | Waste



TENEEO

teneogroup.com.au

WHO WE WORK WITH

Teneo's core business is to provide a one-stop-shop for our valued clients, eliminating interface risk between civil and lining companies to provide a seamless delivery model. This approach has seen us work with some well-known names in the industry.



WHO WE ARE



Teneo is the holistic solution to every energy, mining, water and waste containment facility.

We know we are only as strong as our people. Our senior management team are committed to our employees, starting with safety. We consistently look for safer, more efficient ways to work with the latest technologies.

Teneo's experience covers everything from health and safety management, environmental management, cultural heritage management, procurement, project management, value engineering, project planning, quality management, engineering design and construct.

Our ability to deliver civil and lining outcomes means we can be trusted to deliver it all, or play our part.

WHAT WE DO

True to the Teneo name, our core business is to contain across broad applications and industries.

With a modern fleet of civil construction plant and equipment, fitted with the latest GPS controlled technology, we safely and efficiently deliver a range of containment facilities - no matter the size or shape - for our clients.

We also provide the right technical advice early, drawing on 100+ years of combined experience in the geomembrane industry that sits across our management team, and applying it to deliver whole-of-project civil and lining solutions.

We develop tailored solutions to suit environmental containment, process liquid storage and chemical containment across the energy, mining, water and waste sectors.

We offer a truly contained, holistic approach to project delivery.





TENEEO

HILUX
2.8 D-4D

SWANBANK - A TOTAL CONTAINMENT SOLUTION



SURVEYING



DRILLING AND BLASTING



CLAY PLACEMENT

Teneo's holistic approach at Swanbank containment facility:

Project Management

- Procurement
- HSEQ management
- Project planning
- Survey

Civil Scope

- Clearing and grubbing
- Topsoil strip
- Live creek diversions
- Culvert construction
- Road construction
- Engineered fill embankment construction
- Drilling and blasting
- Stormwater management
- Abandoned mine water pit rehabilitation

Liner interface and layer configuration

- Geofabric placement
- Clay placement Layer 1
- GCL placement Layer 2
- HDPE placement Layer 3
- Cushion geotextile placement Layer 4
- Leachate collection pipework
- Leachate collection gravel Layer 5 on top of liner
- Leachate sumps and risers
- Separation geotextile Layer 6
- Anchor trench backfill



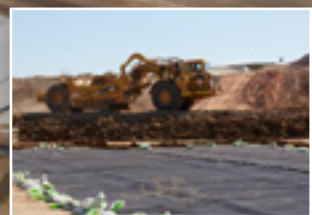
CONSTRUCTION



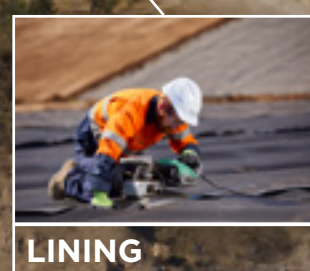
**GRAVEL
OVER LINER**



**LEACHATE
PIPE WORK**



CIVIL



LINING



**MATERIAL
QUALITY**



SAFETY



KEY CAPABILITIES



GYPSUM CELL 5B CONSTRUCTION

2018

Appointed by Incitec Pivot
\$48m project value
120+ Teneo resources
Total footprint including perimeter off site surface water diversion ditch system, is approx. 51 hectares.
Bulk Earth Works, Site Grading
Ground surface treatment 450,000m²
Cut to fill & trimming all stages 500,000m³
Approx. 31 hectares of 1.5mm double-sided textured HDPE liner, approx. 10 hectares of 1.5mm smooth HDPE liner, over the proposed gypsum cushion area.
HDPE Smooth lining to floor 102,844m²
HDPE Textured lining to Walls & Batters 338,810m²
Vent System Outlet Pipes
Vent Strip - Fabricating, Field Seaming and Installing HDPE Geonet-Geotextile Composite Vent Strips 41,721m²
HDPE liner seep shields for the drain outlets
Triplanar Drain filtration system 15,038m²
Poly Propylene Filter Fabric 400/m² Drain filtration system 43,000m²

SWANBANK STAGE 1B CELL 7

2018

Appointed by Remondis
\$11m project value
100+ Teneo resources
Designed and constructed 600,000m³ of earthworks
100,000m³ of unsuitable soils
Supplied and placed 50,000ton of clay liner
68,000m³ live creek diversion over 800m long
Supplied and installed 2 large box culverts with concrete road crossings
Drilled and blasted 160,000m³ of sandstone
Supplied and installed 250,000m² of GCL, geomembrane liner and cushion textile
Supplied and placed 14,500m³ of leachate aggregate
Supplied and installed 850Lm of slotted HDPE leachate pipe
Remediated an abandoned mine storage dam with 95,000m³ rock
Constructed a 15,000m² permeant sediment dam
Constructed 1.5Km of LV access tracks

CONSTRUCTION CELL 5A

2018

Appointed by Wyndham City Council
\$11m project value
80+ Teneo resources
Completed 500,000m³ of earthworks
Installed 125,000m² of GCL clay liner
Supplied and installed 125,000m² of high-density polyethylene (HDPE) liner
Installed 125,000m² cushion geotextile
Installed 35,000m³ of leachate collection aggregates
Installed 106,000m² of separation geotextile

WOLEEBEE CREEK

2015

Appointed by QGC - Golders
\$4m project value
160+ Teneo resources
Over 1,257,000m² of geosynthetic material
1,851,000m³ cut to fill earthworks
Four large sumps as part of leak detection system
1.5 km diversion drain 31ha footprint BC/IX ponds
8ha IX pond with 255ML capacity





DUNMORE LANDFILL CELL 5A

2017

Appointed by Shell Harbour City Council
 \$3m project value
 20 Teneo resources
 Supplied and placed 12,000m³ subgrade
 Supplied and placed 9,000m³ formation layer
 Supplied and installed 10,000m² GCL
 Supplied and installed 10,000m² HDPE
 Supplied and installed Leachate Collection and Extraction System
 Supplied and installed Groundwater Relief System
 Sourced, crushed, screened and placed confirming Drainage Aggregate
 Supplied and placed geotextile
 Surface Water Management

HERVEY RANGE WASTE MANAGEMENT

2016

Appointed by Townsville City Council
 \$4m project value
 20+ Teneo resources
 Constructed multicomponent final landfill cap
 Stormwater and leachate management infrastructure
 200,000m²+ of geosynthetic materials
 Installed textured / coated GCL
 Installed flownet drainage layer
 Installed geogrid

ORANA 3 - RELINING

2016-2017

Appointed by QGC - Shell - FKG
 Located in Chinchilla, Queensland
 \$12m project value
 50+ Teneo resources
 Removed existing single liner and reconditioned the subgrade
 Compacted clay layer
 K<10-9msl
 Completed flownet leak detection - primary and secondary
 Installed 2mm high temperature and high performance HDPE geomembrane, white and conductive
 Installed polymer modified geosynthetic clay liner
 Installed bespoke liner ballast system

DOOEN'S LANDFILL CELL 2

2017

Appointed by Horsham Rural City Council
 \$1.5m project value
 15+ Teneo resources
 Bulk earthworks and site preparation
 Placement of earthen layer
 Supplied and installed GCL, HDPE geomembrane liner, and cushion geotextile
 Supplied and installed leachate collection system and leachate sump riser
 Supplied and installed Groundwater Relief System
 Sourced, crushed, screened and placed confirming drainage aggregate



INCITEC PIVOT PHOSPHATE HILL CELL 3

Appointed by
Incitec Pivot
\$4.7m project value
50+ Teneo resources
Located in Mount Isa,
Queensland
Installed geosynthetics
for a contaminated water
storage pond
Consisted of two layers
290,000m² total pond area
Supplied and installed
290,000m² of HDPE
geomembrane
Supplied and installed
290,000m² protection
geotextile



Appointed by Ballarat
Regional Council
\$3m project value
30+ Teneo resources
Cell H 60,000m³ cut
volume and 35,000m³
fill volume
Leachate pond 2,700m³
cut volume and
8,800m³ fill volume
Supplied and installed
19,500m² of GCL
Supplied and installed
19,500m² of HDPE
smooth and textured
Supplied and installed
19,500m² of cushion
textile
Supplied and placed
8,000m³ of leachate
gravel
Supplied and installed
Geocomposite Drainage
Layer

BALLARAT REGIONAL LANDFILL CELL H



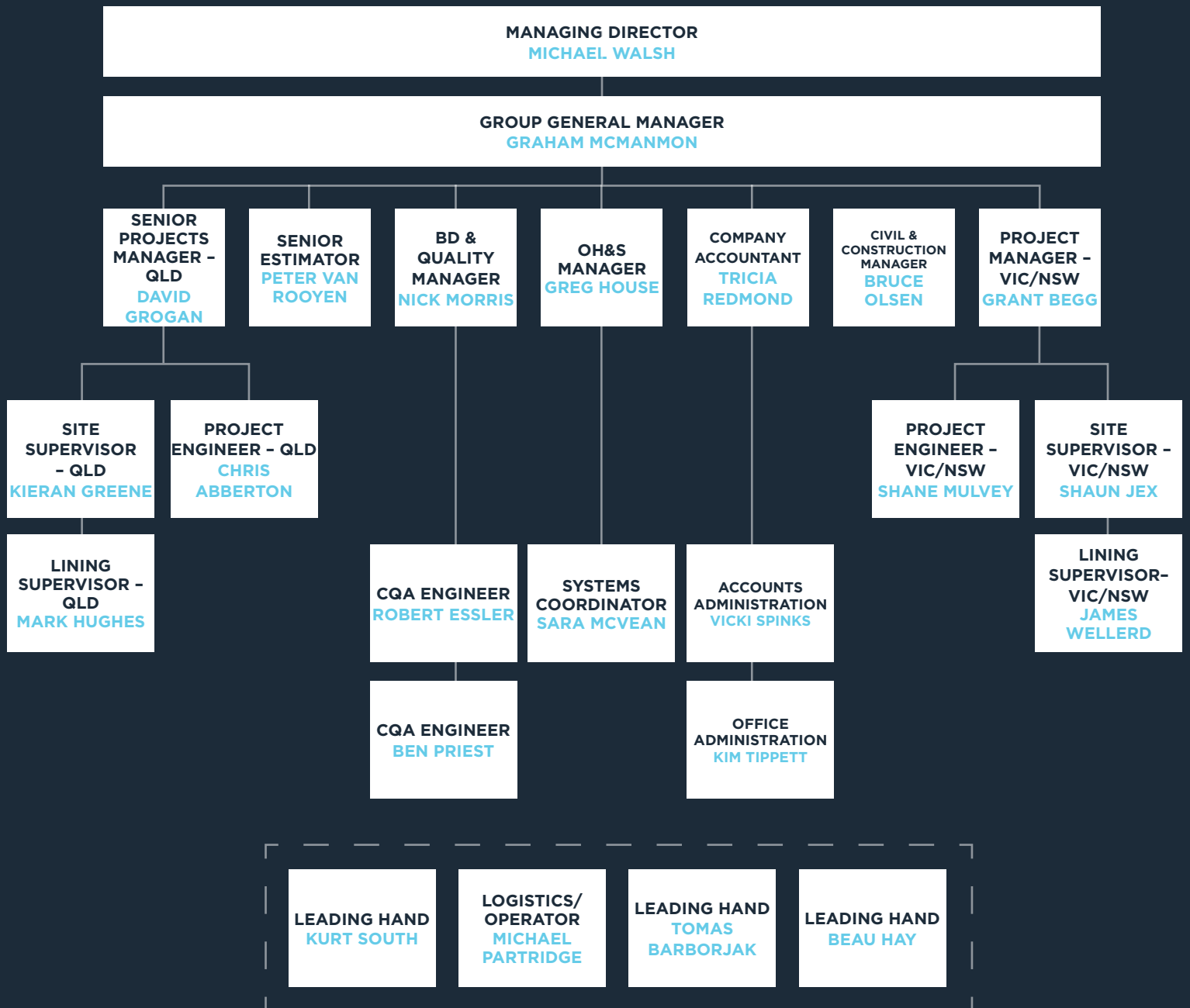
WHERE WE WORK

Teneo is a proud, locally owned and operated business. Our team is always on-hand to see the job through.



ORGANISATION CHART

Teneo understands it takes good people to build a good business. Meet the management team



PEOPLE

One team for all containment projects.

Managing Director **Michael Walsh**

27 years of experience

Involved in over \$1.5b of projects

Group General Manager **Graham McManmon**

18 years of experience

Involved in over \$1.5b of projects

Civil and Construction Manager **Bruce Olsen**

50 years of experience

Involved in over \$200m
of projects

Project Manager - QLD **David Grogan**

27 years of experience

Involved in over \$1b of projects

Project Manager - VIC/NSW **Grant Begg**

13 years of experience

Involved in over \$1.5b of projects

OHS Manager **Greg House**

20 years of experience

Involved in over \$1m of projects

Quality Manager **Nick Morris**

13 years of experience

Involved in over \$500m
of projects

Project Engineer - QLD **Chris Abberton**

30 years of experience

Involved in over \$80m of projects

Project Engineer - VIC/NSW **Shane Mulvey**

12 years of experience

Involved in over \$400m
of projects

Site Supervisor - VIC/NSW **Shaun Jex**

23 years of experience

Involved in over \$2b
of projects

Site Supervisor - QLD **Kieran Greene**

15 years of experience

Involved in over \$1b
of projects

Lining Supervisor **Mark Hughes**

12 years of experience

Involved in over \$120m
of projects

Senior Estimator **Peter Van Rooyen**

24 years of experience

Involved in over \$1b
of projects

Over **260 years** of combined experience
involved in over **\$11 billion** of projects.

ACCREDITATIONS

Focused on what matters most.

Teneo Group is entrenched in the values that remain core to successful project delivery today – quality, safety and efficiency.

Teneo is accredited and audited by Compliance Australia Certification Services for our health and safety, quality assurance and environment policies:

- Safety AS/NZ 4801:2001
- Quality ISO 9001:2015
- Environmental 14001:2015
- IAGI (International Association of Geosynthetic installers) Approved Installer
- IGS (International Geosynthetic Society) Member

We employ and actively develop our personnel to not only have the skills to make good decisions, but maintain strong, working relationships.

Installer Membership



International Association of Geosynthetic Installers







TENEO

FOR MORE INFORMATION CONTACT: 1300 789 190

BRISBANE

Level 2, Kings Row 2,
50 McDougall Street
Milton Qld 4064

MELBOURNE

1/1 Queens Road,
Melbourne VIC 3004