

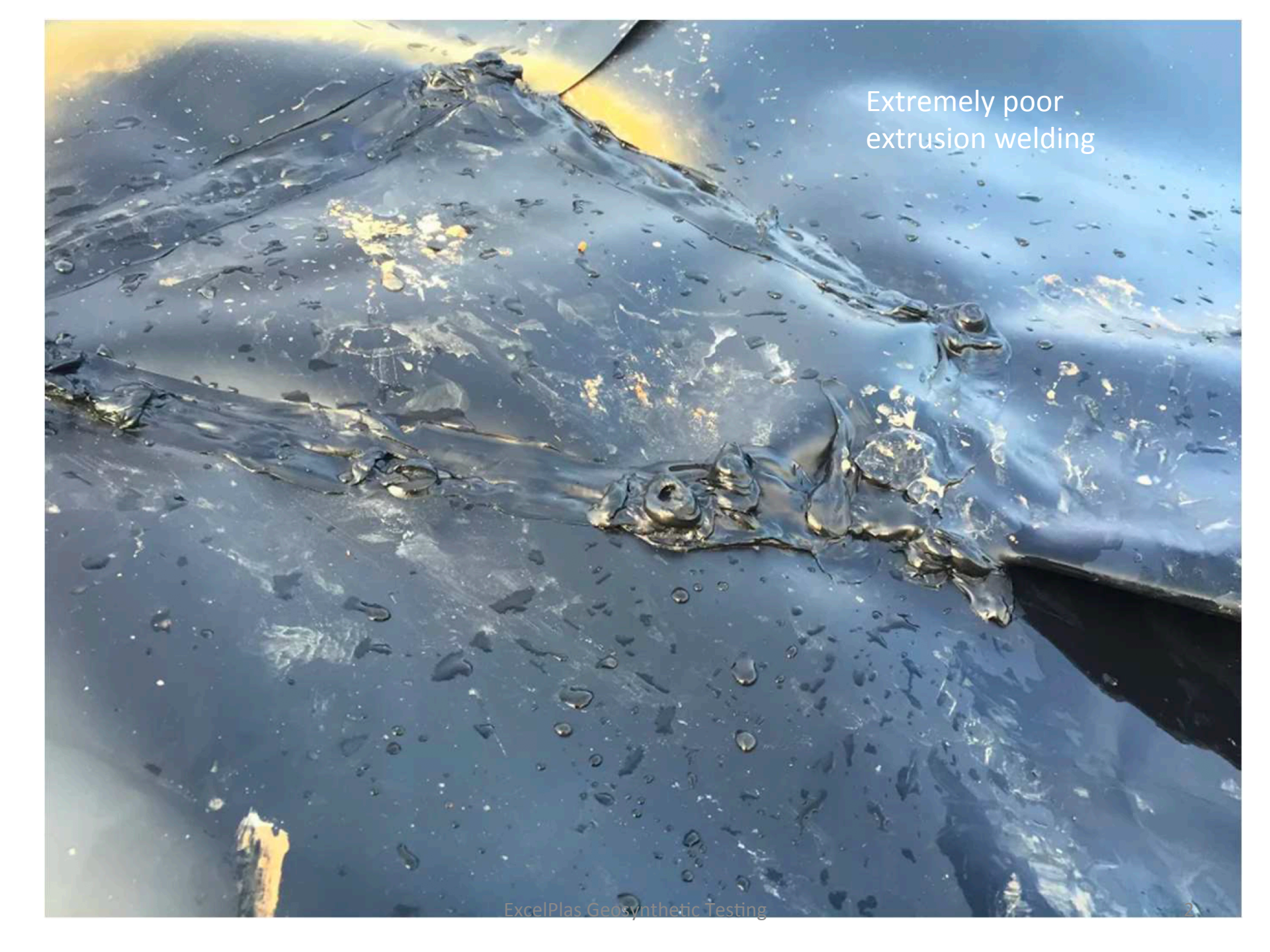
# ExcelPlas

Independent  
Materials  
Testing

## Examples of Poor Welding of HDPE Geomembranes

Dr. John Scheirs

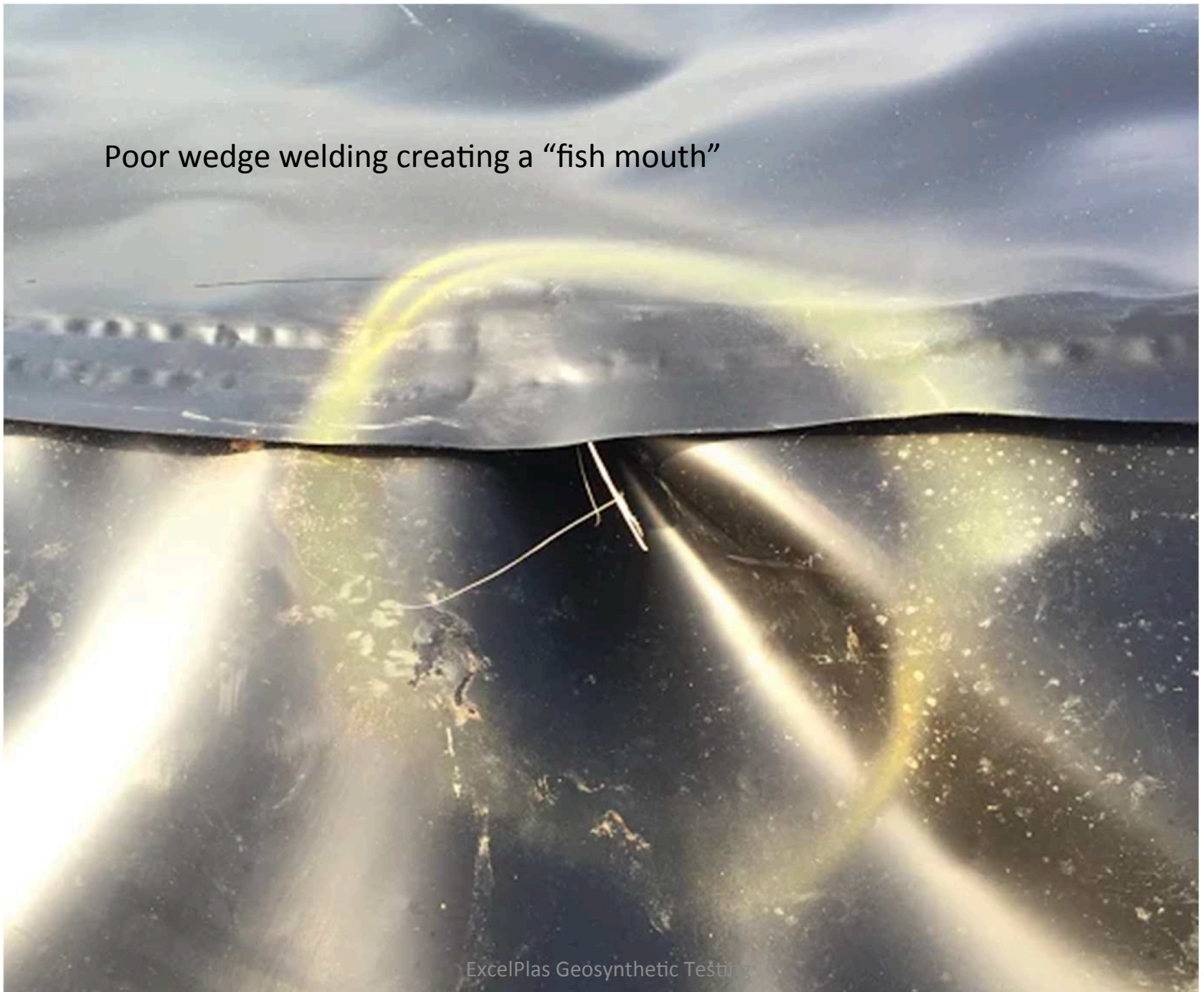
[www.excelplas.com](http://www.excelplas.com)



Extremely poor  
extrusion welding



Poor wedge welding creating a “fish mouth”



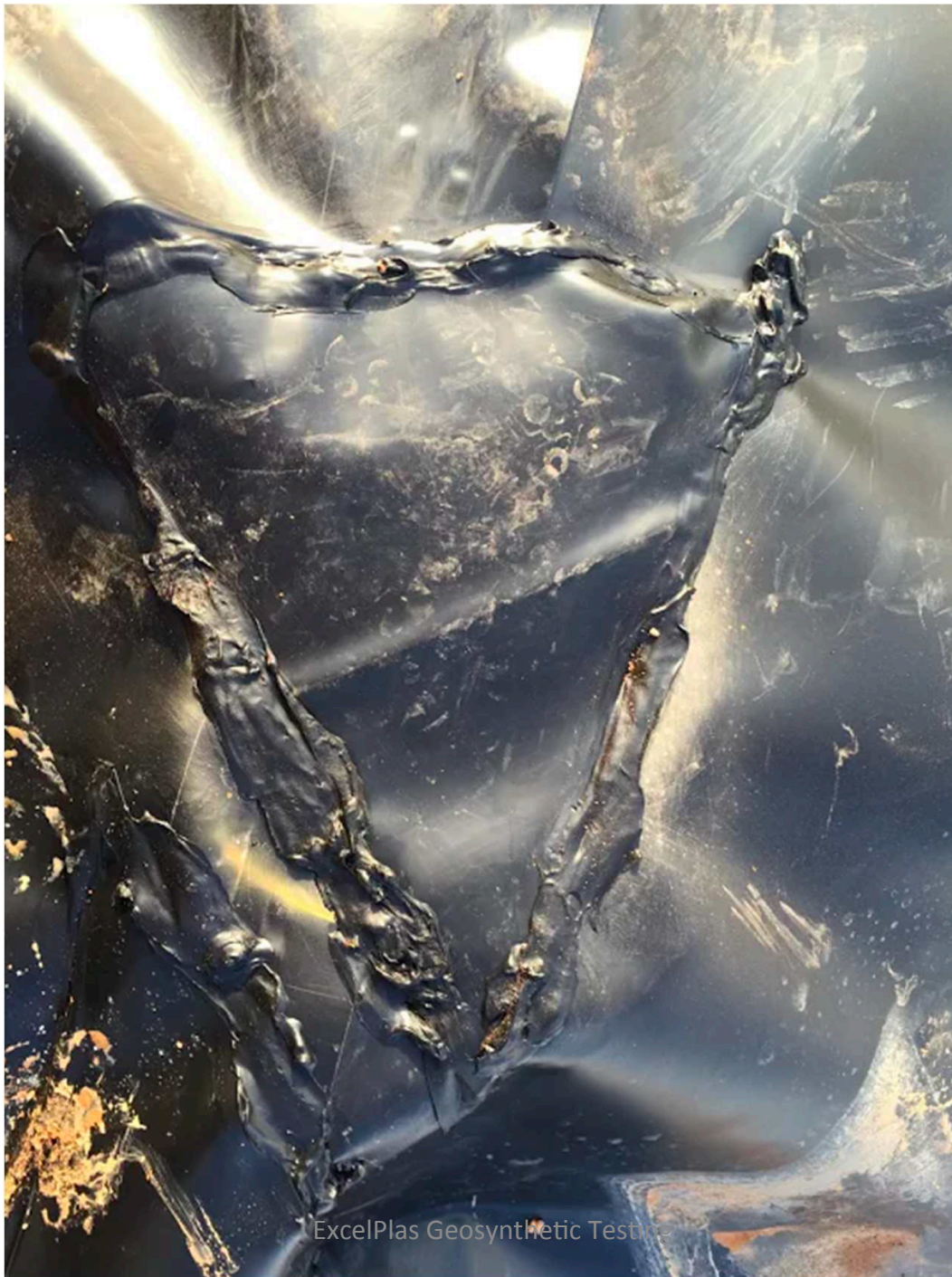




Burn-through damage at “fish mouth”



Extremely poor  
extrusion welding  
of a patch  
(ref. C. Topliff)





# ExcelPlas

**JOHN SCHEIRS, B. App. Sci., PhD**

Director

Mobile: +61 (0) 407 261 913

Email: [john@excelplas.com](mailto:john@excelplas.com)

**ExcelPlas Pty Ltd**

473 Warrigal Road (Rear)

Moorabbin VIC 3189 Australia

Phone: +61 (0) 3 9532 2207

Website: [www.excelplas.com](http://www.excelplas.com)



ACCREDITED FOR  
**TECHNICAL  
COMPETENCE**

*Director – ExcelPlas Polymer Labs (Geosynthetics Testing)*

*Author – Guide to Polymeric Geomembranes (Wiley)*

*Editor - Geosynthetics News Australia (GNA)*

*Founder - Asian Geosynthetics Association (AGA)*