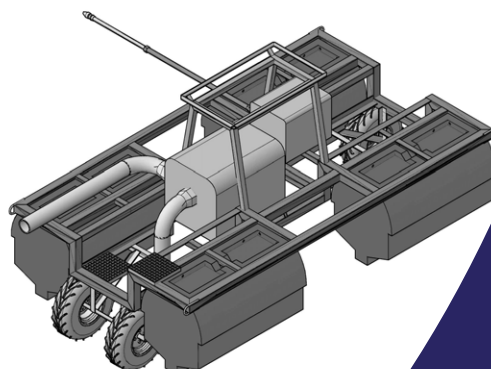


# SEDIMENT SAMPLING AND ANALYSIS



**WE KNOW POLYMERS - WE KNOW TESTING**

# 25+

Years in Operation

# 15+

Qualified Staff

# 500+

Return Customers

# 1000+

Failure Analyses

# 8000+

Laboratory Jobs

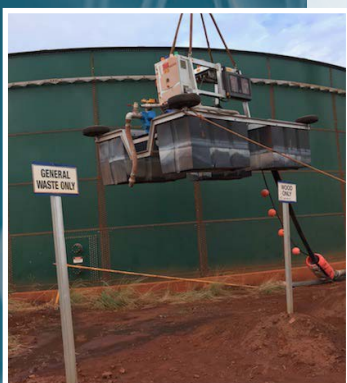
- Bulk Density (Drive Tube) (ASTM D2937)
- Grain Size (ASTM D422)
- Total Solids (EPA 160.3)
- Total Volatiles (EPA 160.4)
- Water content by gravimetric oven drying
- Sediment Grain Size and Sieve Analysis
- Microscopy of Dried Sediment and Silt
- Detection & Analysis of Microplastics in sludge
- Detection and Analysis of OxoDegradable Plastic Fragments
- Sampling Tools to Measure Pond Scum & Sludge Levels

#### Other Services Offered via Mini Dredging Services

- Silt sampling and remediation (Desilting)
- Sludge sampling and remediation (Desludging)
- Scum sampling and remediation (Descumming)
- Sludge surveys
- Dewatering of Sewage Sludges
- Dewatering of Silt
- Flocculant Testing and Selection
- Polymer Flocculant Screening
- PH Correction of Acid Sulphate Soil (ASS)

#### Major Customers

- Melbourne Water
- Water Corporation W.A.
- Dorset Golf Course
- Tas Water





ExcelPlas can undertake testing & analysis of silt and sediment, including from marine and freshwater to guide and inform sediment dredging, sediment management and disposal options.

ExcelPlas provides national sediment sampling/extraction/removal expertise to support dredging programs, contaminated sediment remediation programs, and sediment dewatering programs. Our technical skills, experience and expertise combine to assist clients in navigating and managing the various challenges posed by sediment analysis and characterization in sometimes complex, hazardous or sensitive environmental conditions.

ExcelPlas uses specialized equipment for sediment sampling and removal with ROV mini-dredgers enabling sampling in both remote and contaminated areas. Mining dams and lagoons offer unique challenges in terms of highly acidic or hazardous liquors. ExcelPlas utilizes highly unique sample extraction and equipment for sampling mining, marina and freshwater environs. ROV mini-dredgers allow sampling and sediment removal in challenging environments with no risk to the operator or analysts. ExcelPlas has developed the technical expertise necessary to perform complex sediment extraction/sampling in a variety of challenging environments such as sewage ponds, landfill leachate ponds, acidic mining liquor ponds, abattoir ponds and industrial sludge ponds.

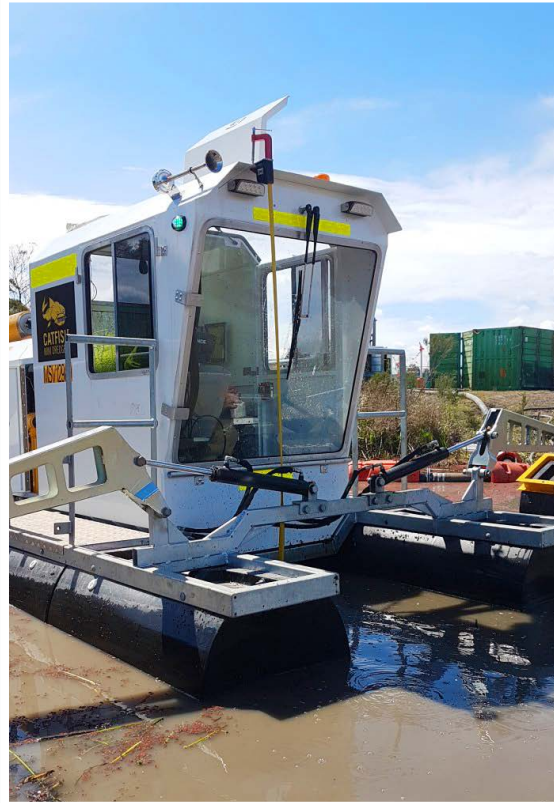
ExcelPlas provides a comprehensive range of sediment analysis programs to support dredging projects, contaminated sediment remediation projects and sediment dewatering projects.



#### Services Offered:

- ROV Sampling Equipment for Ponds, Lagoons and Dams
- Sampling of sludge from landfill leachate ponds
- Sampling of silt and sediment from marinas and channels
- Sampling of silt from Wetlands Sediment Ponds
- Desilting and remediation of Road Derived Sediment (RDS) ponds
- Sampling of scum from Abattoir Ponds
- Sampling of silt from Golf Course Ponds
- Testing & Evaluation of Dredged Spoil for Disposal
- Viscosity of sludge (shear thinning or shear thickening)
- Slurry Density by Hydrometer





ExcelPlas leads the way with digital communication with news blasts and news feeds in the industries and sectors in which it operates. eNewsletters and eAlerts are sent to its key customers weekly to be 'front of mind' for testing and analysis needs.

#### PRODUCT TESTING WEBSITES

<http://www.excelplas.com/>  
<http://www.polymertesting.com.au/>  
<http://www.polypipetesting.com.au/>  
<http://www.uvtesting.com.au/>  
<https://www.claddingtest.com/>  
<https://www.minidredgers.com.au/>

#### DIGITAL MARKETING WEBSITES

<https://www.geosyntheticnews.com.au/>  
<https://www.polypipenews.com.au/>  
<https://www.claddingtest.com/news/>  
<https://www.cablenewsaustralia.com.au/>  
<https://www.tailingsnews.com.au/>  
<http://www.masterbatchnews.com.au/>

**contact: [www.excelplas.com](http://www.excelplas.com)**



# WE KNOW POLYMERS - WE KNOW TESTING